

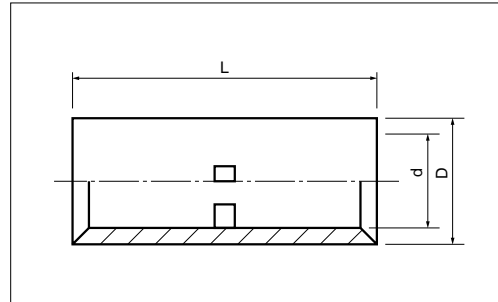
SLEEVES (B TYPE)

A

BUTT

JIS C 2806

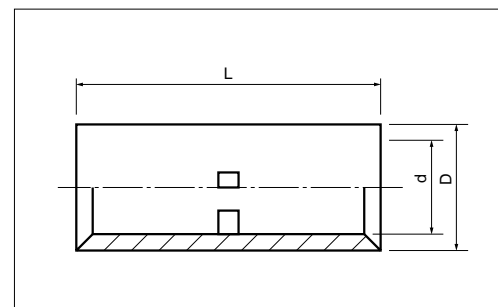
BUTT CONNECTORS



PART NUMBER		DIMENSIONS mm			WIRE RANGE			TOOL No.		STD QTY/BOX
		L	D	d	SOLID mm	STRANDED mm ²	AWG MCM	HAND • HYDRAULIC	TOOL BODY No. / DIES No.	
B 0.5	○	11.5	2.6	1.4	0.57 ~ 0.7	0.25 ~ 0.75	22-18	NH 1 NH 70 NH 60 NH 61 NH 9 NOP 60, NOM 60 NOM 150, NOP 150H NOH 300K	NA 3 N3 70	1000 (100 × 10)
B 1.25	●	15.0	3.3	1.7	0.57 ~ 1.44	0.25 ~ 1.65	22-16		NA 3 N3 7	
B 2	●		4.1	2.3	1.14 ~ 1.82	1.04 ~ 2.63	16-14			
B 5.5	●		5.4	3.4	1.82 ~ 2.89	2.63 ~ 6.64	12-10			
B 8	●	21.0	7.0	4.5	2.89 ~ 3.65	6.64 ~ 10.52	8			
B 14	●	26.0	8.9	5.8	-	10.52 ~ 16.78	6			
B 22	●	29.0	11.3	7.7		16.78 ~ 26.66	4			
B 38	●	32.0	13.2	9.4		26.66 ~ 42.42	2			
B 60	●	36.0	15.3	11.4		42.42 ~ 60.57	1/0			
B 70	○		17.5	13.3		60.57 ~ 76.28	2/0			
B 80	●	38.0	19.5	14.5		76.28 ~ 96.3	3/0			
B 100	●		22.1	16.4		96.3 ~ 117.2	4/0			
B 150	●		54.0	26.4		19.5	117.2 ~ 152.05	250-300MCM		
B 180	○	55.0	28.5	21.0		152.05 ~ 192.6	300-350MCM			
B 200	●	63.0	32.4	24.0		192.6 ~ 242.27	400MCM			
B 325	●	72.0	37.0	28.0	242.27 ~ 325	500-600MCM				

BUTT (EXTRA LONG)

BUTT CONNECTORS



PART NUMBER	DIMENSIONS mm			WIRE RANGE			TOOL No.	STD QTY/BOX
	L	D	d	SOLID mm	STRANDED mm ²	AWG MCM		
B 100-72L	72.0	22.1	16.4	-	96.3 ~ 117.2	4/0	SAME AS STANDARD BUTT CONNECTOR TOOL.	20
B 150-72L		26.4	19.5		117.2 ~ 152.05	250-300MCM		15
B 200-72L		32.4	24.0		192.6 ~ 242.27	400MCM		10

NOTE

- 1) ● : JIS, UL, CSA ○ : UL, CSA : UL
- 2) Refer to page-12 for UL/CSA and proper strip length of wire.